

**BALDOR® • RELIANCE** 

**Product Information Packet**

**EM4400T-G**

**100HP, 1785RPM, 3PH, 60HZ, 405T, A40064M, TEFC**

Part Detail							
Revision:	J	Status:	PRD/A	Change #:		Proprietary:	No
Type:	AC	Elec. Spec:	A40WG1610	CD Diagram:	416820-002	Mfg Plant:	
Mech. Spec:		Layout:	617429-001	Poles:	04	Created Date:	07-17-2013
Base:		Eff. Date:	10-01-2019	Leads:	3#2,6#4		

Specs			
Catalog Number:	EM4400T-G	Design Code:	B
Enclosure:	TEFC	Drip Cover:	No Drip Cover
Frame:	405T	Duty Rating:	CONT
Frame Material:	Iron	Feedback Device:	NO FEEDBACK
Output @ Frequency:	100.000 HP @ 60 HZ	Heater Indicator:	No Heater
	75.000 HP @ 50 HZ	Insulation Class:	H
Synchronous Speed @ Frequency:	1800 RPM @ 60 HZ	Inverter Code:	Inverter Ready
Voltage @ Frequency:	380.0 V @ 50 HZ	KVA Code:	G
	230.0 V @ 60 HZ	Lifting Lugs:	Standard Lifting Lugs
	190.0 V @ 50 HZ	Motor Lead Quantity/Wire Size:	3 @ 2 AWG
	460.0 V @ 60 HZ	Motor Type:	A40064M
XP Class and Group:	None	Mounting Arrangement:	F1
XP Division:	Not Applicable	Power Factor:	87
Agency Approvals:	CSA EEV	Product Family:	General Industrial
	CCSA US	Pulley End Bearing Type:	Ball
Auxillary Box:	No Auxillary Box	Pulley Face Code:	Standard
Base Indicator:	Rigid	Shaft Ground Indicator:	Shaft Grounding
Bearing Grease Type:	Polyrex EM (-20F +300F)	Shaft Rotation:	Reversible

<b>Current @ Voltage:</b>	246.000 A @ 208.0 V	<b>Shaft Slinger Indicator:</b>	No Slinger
	224.000 A @ 230.0 V	<b>Speed Code:</b>	Single Speed
	206.000 A @ 190.0 V	<b>Motor Standards:</b>	NEMA
	112.000 A @ 460.0 V	<b>Starting Method:</b>	Direct on line
		<b>Thermal Device - Bearing:</b>	None
		<b>Thermal Device - Winding:</b>	None

Nameplate NP2496L

MOBIL POLYREX EM

Nameplate NP2381L			
SPEC NO.	P40G3927	CAT.NO.	EM4400T-G
HP	100/75	PHASE	3
RPM	1785//1485	DESIGN	B
VOLTS	230/460//190/380	TYPE	P
AMPS	224/112//206/103	AMB	40
DRIVE END BEARING	80BC03J30X	SF	1.15
OPP D.E. BEARING	80BC03J30X	DUTY	CONT
SER.NO.		ENCL	TEFC
		INSUL.CLASS	H
		CODE	G
		NEMA-NOM-EFFICIENCY	95.4
		USABLE AT 208V @ 246 AMPS	
		VPWM INV DUTY 10:1 CT AT 1.0SF	MOTOR WEIGHT

Parts List		
Part Number	Description	Quantity
SA267716	SA P40G3927	1.000 EA
RA254386	RA P40G3927	1.000 EA
421948032	LABEL, MYLAR	1.000 EA
000692000FF	N/P	1.000 EA
NP2496L	MOTOR LUBE NAMEPLATE	1.000 EA
000613006PU	N/P (RELEASE QTY 10,000) UL CSA LABEL	1.000 EA
000692000VD	LABEL WARNING	1.000 EA
NP2381L	SUPER-E ,SS, CSA,CSA SUPER-3	1.000 EA
089412501A	BRKT FTMT G400 FIN MACH 6316 89412500WCA	1.000 EA
415072001B	CLAMP	1.000 EA
083198101A	G400 STD FAN COVER MACHINING	1.000 EA
034180012DA	KEY 1X4X1/4X1-1/2 L	1.000 EA
078548001R	FAN KB 234/150 (84) 400	1.000 EA
004824015A	GREASE POLYREX EM	0.880 LB
032018020EK	HHCS 5/8-11X2-1/2 PLTD.	4.000 EA
032018008CK	HHCS 3/8-16X1L PLATED	4.000 EA
032018008CK	HHCS 3/8-16X1L PLATED	4.000 EA
032018024CK	HHCS 3/8-16X3 PLTD.	3.000 EA
034692005AA	P PLUG 3/4"BLK.	1.000 EA
415096002A	CPLG 1/8 HEX TYPE	1.000 EA
410700000DA	WAVY SPRING WASHER	1.000 EA
034000014AB	WSH ID.406 OD.812 TH.065	4.000 EA
034530052AB	P/NIP 1/8X6-1/2 GALV.	1.000 EA
034530056BB	P/NIP 1/4X7 SCHED 40	1.000 EA

Parts List (continued)		
Part Number	Description	Quantity
034690001AB	1/8" NPT SQHDPLG	1.000 EA
034690001AB	1/8" NPT SQHDPLG	1.000 EA
034631002AB	BUSH 1/4 TO 1/8 PLTD.	1.000 EA
034690001AB	1/8" NPT SQHDPLG	1.000 EA
089412501A	BRKT FTMT G400 FIN MACH 6316 89412500WCA	1.000 EA
032018020EK	HHCS 5/8-11X2-1/2 PLTD.	4.000 EA
032018024CK	HHCS 3/8-16X3 PLTD.	3.000 EA
034690002AB	PPLG 1/4" PLTD.	1.000 EA
077176000L	C/BOX, 360-400	1.000 EA
BP5328	SHAFT GRD BRUSH (SGR-89.4-3CFHA)	1.000 EA
077176001A	CBOXC, PAINTED 360-400	1.000 EA
043292000AJ	GASK 320-400	1.000 EA
402731001A	GASK 360-440	1.000 EA
418150003A	GREASE FITTING CAP	1.000 EA
MG1025Y17	WILKOFAS, 789.701, SUPER E PEARL GOLD	0.375 GA
032018005AK	HHCS 1/4-20X5/8 PLATED	4.000 EA
035000001A	ALFTG 1/8" 1610-BL	1.000 EA
415000103D	T/LUG #4AWG-1/0AWG W/HOLE FOR .250 BOLT	1.000 EA
406099000A	PLUG - FAN COVER 320-440	1.000 EA
033512004LB	HHTTS 1/4-20X1/2 PLTD.	1.000 EA
035000001A	ALFTG 1/8" 1610-BL	1.000 EA
418150003A	GREASE FITTING CAP	1.000 EA
033775004EA	DRSCR #6-1/4 304 S.S.	2.000 EA
034180044JA	KEY 3/4X3/4X5-1/2 L	1.000 EA

Product Information Packet: EM4400T-G - 100HP,1785RPM,3PH,60HZ,405T,A40064M,TEFC

604797045	STD. 400 FRAME SKID	1.000 EA
032510024D	CARRIAGE BOLT - 444	2.000 EA
034001016AB	WSHR .562ID 1.375OD .109	2.000 EA
034001014AB	FLAT WASHER 3/8"PLATED	2.000 EA
033300014AC	HEX NUT, SHIPPING - 400	2.000 EA
604799003C	PLASTIC BAG 42X32X46	1.000 EA

S/O	FRAME	HP	TYPE	PHASE/ HERTZ	RPM	VOLTS
	405T	100	P	3/60	1785	230/460
AMPS	DUTY	AMB °C/ INSUL	S.F.	NEMA DESIGN	CODE LETTER	ENCLOSURE
224/112	CONT	40/H	1.15	B	G	TEFC
E/S	ROTOR	TEST S.O.	TEST DATE	STATOR RES. @25 °C OHMS (BETWEEN LINES)		
596956	418142-33-RE	---	---	.0123/.0492		

**PERFORMANCE**

LOAD	HP	AMPERES	RPM	% POWER FACTOR	% EFFICIENCY
NO LOAD	0	28.6	1800	5.49	0
1/4	25.0	39.2	1796	64.3	93.0
2/4	50.0	59.5	1792	82.5	95.4
3/4	75.0	84.6	1788	86.7	95.7
4/4	100	112	1783	87.4	95.4
5/4	125	141	1778	87.3	94.9

**SPEED TORQUE**

	RPM	TORQUE % FULL LOAD	TORQUE LB.-FT.	AMPERES
LOCKED ROTOR	0	151	445	725
PULL UP	360	136	400	706
BREAKDOWN	1721	250	735	382
FULL LOAD	1783	100	295	112

AMPERES SHOWN FOR 460 VOLT CONNECTION. IF OTHER CONNECTIONS ARE AVAILABLE, THE AMPERES WILL VARY INVERSELY WITH THE RATED VOLTAGE.

**TYPICAL DATA**

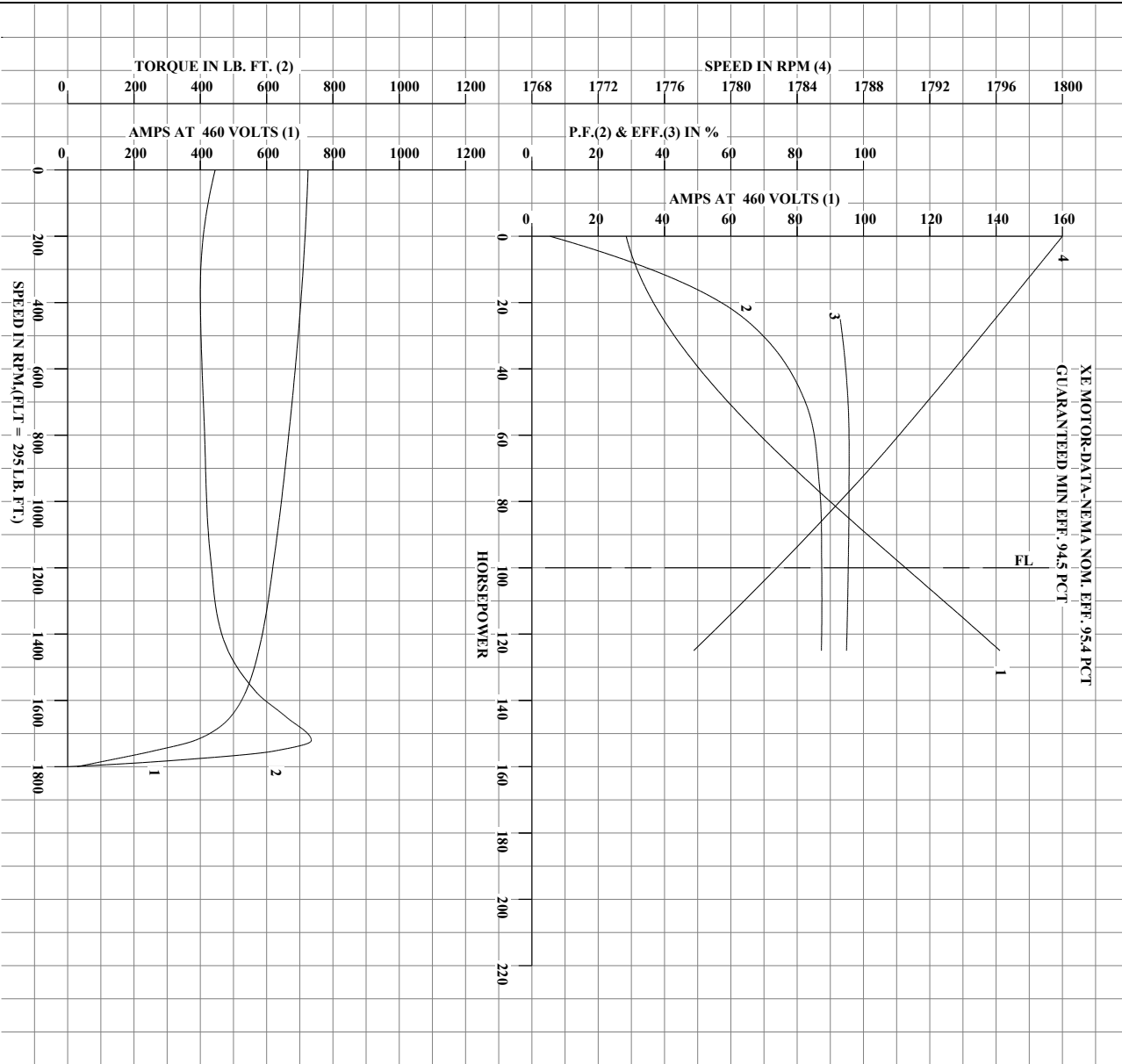
XE MOTOR-DATA-NEMA NOM. EFF. 95.4 PCT  
GUARANTEED MIN EFF. 94.5 PCT

	DRAWN BY: J.P. TSAO	AC MOTOR PERFORMANCE DATA	<b>A40W G1610-R006</b> DATE ISSUED 06/13/14
	CHECKED BY: W.L. SMITH APPROVED BY: W.L. SMITH DATE: 06/13/14		

USERCHR1

Printed on 01/08/2019 11:54 AM

REL.S.O.	405T	RPM	1785	S.F.	1.15	ROTOR	418142-33-RE
FRAME	100	VOLTS	230/460	NEMA DESIGN	B	TEST S.O.	TYPICAL DATA
HP	100	AMPS	224/112	CODE LETTER	G	TEST DATE	--
TYPE	P	DUTY CONT		ENCLOSURE	TEFC	STATOR RES. @ 25°C	.0123/0492
PHASE/HERTZ	3/60	AMB °C/INSUL	40/H	E/S	596956	OHMS (BETWEEN LINES)	



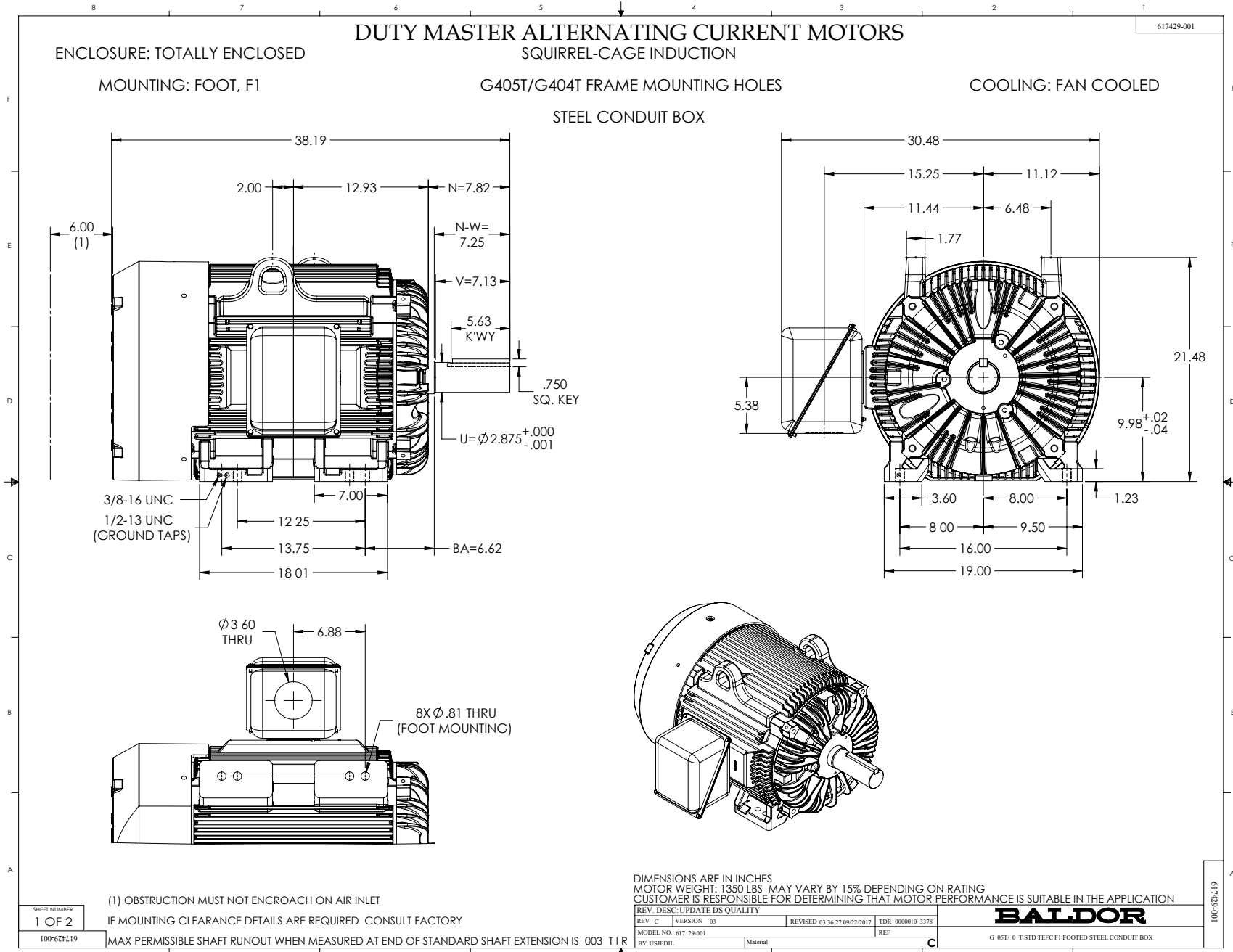


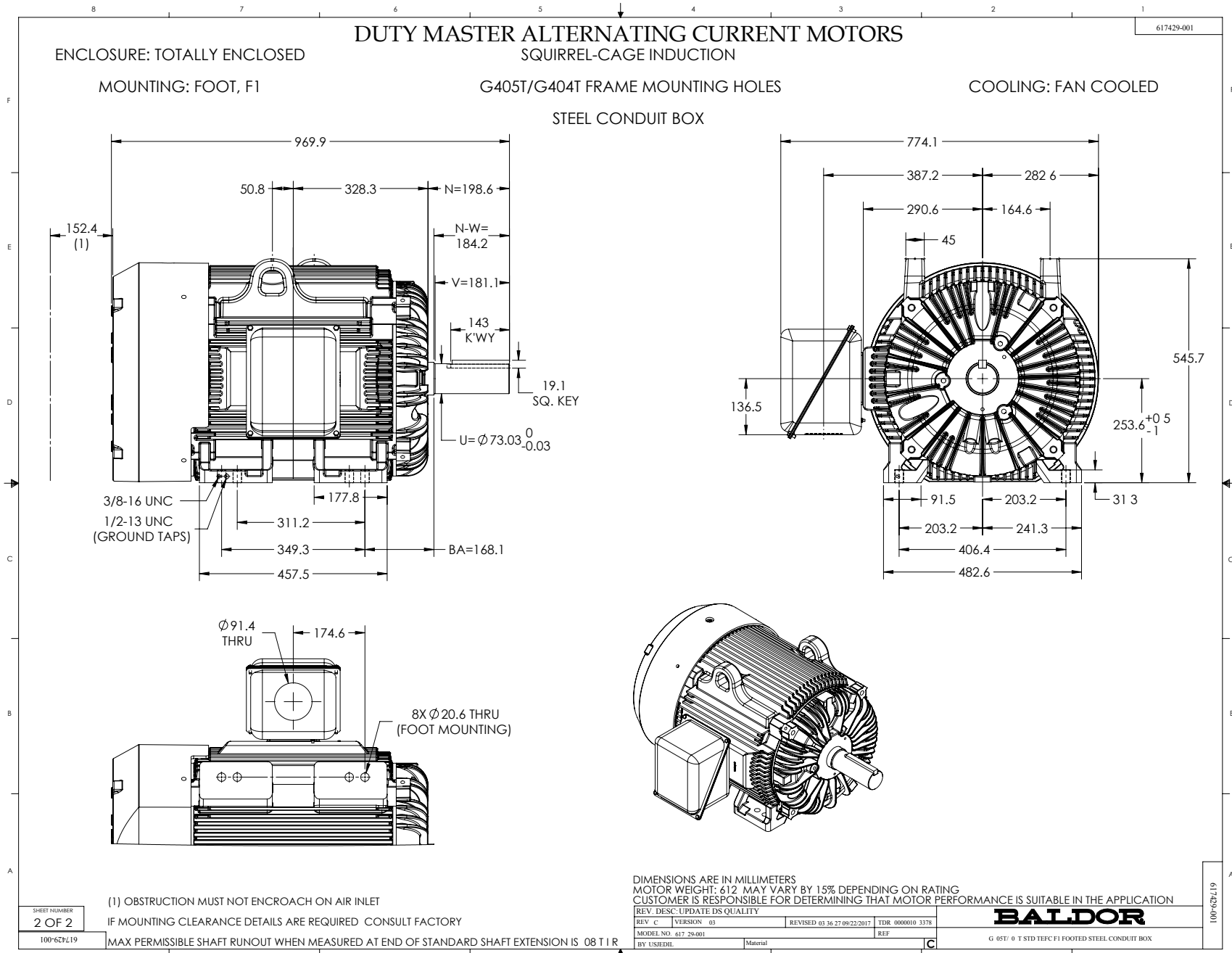
**DRAWN BY: J.P. TSAO**  
**CHECKED BY: W.L. SMITH**  
**APPROVED BY: W.L. SMITH**  
**DATE: 06/13/14**

**AC MOTOR**  
**PERFORMANCE**  
**DATA**

**A40WG1610-R006**  
**ISSUE DATE: 06/13/14**

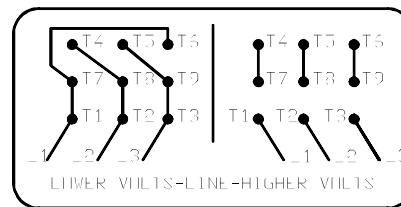
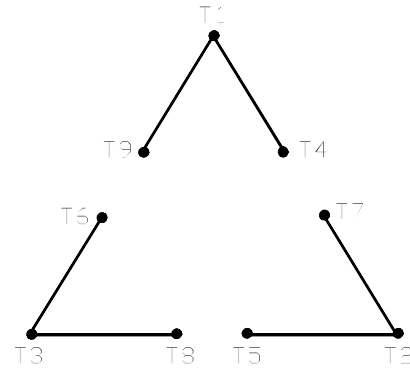
USERCHR1  
 Printed on 01/08/2019 11:54 AM





416820-002

A-C MOTOR  
 CONNECTION DIAGRAM  
 STANDARD 9 LEAD DELTA-CONNECTED



(N.P. 1575-B)

416820-002

REV. DESC: FONT CHANGE FOR PDF SEARCHABLE		
REV. LTR: A	VERSION: 01	TDR: 000001009382
FILE: \MGA\00000\661	REVISED: 02:46:19 02/13/2020	BY: MGHMTT
MTL: -	⊙ □	

**BALDOR - RELIANCE®**

CONN DIAG - STANDARD 9 LEAD, DELTA-CONNECTED

SH 1 of 1

Marketing maintained PDF of MN408:

[MN408?ManNumber=MN408](#)

Marketing maintained PDF of MN416:

[MN416?ManNumber=MN416](#)